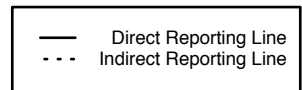
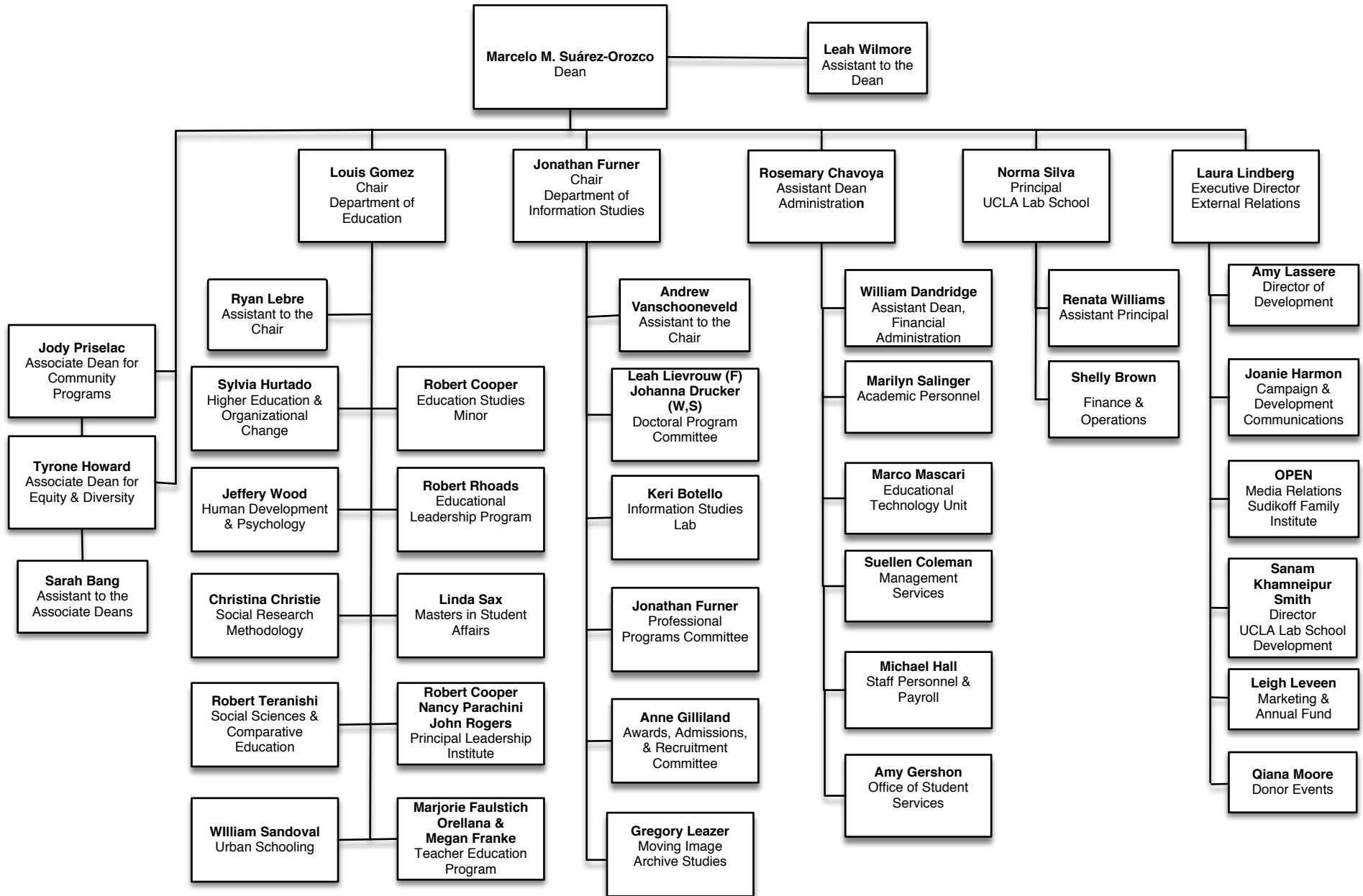


UCLA GSE&IS Administrative Organization



GSE&IS Centers, Institutes, and Partnership Schools

<p>Black Male Institute Tyrone Howard, Director</p>	<p>(310) 206-3167</p>	<p>Institute for Immigration, Globalization, and Education Carola Suárez-Orozco, Marcelo Suárez-Orozco, and Robert Teranishi, Co-Directors</p>	<p>(310) 206-0647</p>
<p>Center for Global Digital Cultures Ramesh Srinivasan, Director</p>	<p>(310) 825-8799</p>	<p>Paulo Freire Institute Carlos A. Torres, Director and Aly Juma, Associate Director</p>	<p>(310) 206-1649</p>
<p>Center for Improving Child Care Quality Carollee Howes, Director</p>	<p>(310) 206-4470</p>	<p>Smarter Balanced Tony Alpert, Executive Director Luci Willits, Deputy Executive Director</p>	<p>(310) 825-0659</p>
<p>Center for Information as Evidence Anne Gilliland, Director</p>	<p>(310) 825-7310</p>	<p>Sudikoff Family Institute for Education & New Media OPEN, Public Information Officer</p>	<p>(310) 206-0513</p>
<p>Center for International Development Education Marcelo Suárez-Orozco, Interim Director</p>	<p>(310) 825-8308</p>	<p>UCLA Lab School Norma Silva, Principal Renata Gusmao-Garcia Williams, Assistant Principal</p>	<p>(310) 825-1557 (310) 206-0594</p>
<p>Center for the Study of Evaluation/National Center for Research on Evaluation, Standards, and Student Testing (CSE/CRESST) Li Cai, Director Noelle Griffin, Associate Director</p>	<p>(310) 206-1532</p>	<p>UCLA Community School (UCLA-CS) Karen Hunter Quartz, Director of Research and UCLA Contact Leyda W. Garcia, Principal</p>	<p>(310) 206-5241 (310) 480-3763</p>
<p>Center X: Where Research and Practice Intersect for Urban School Professionals John Rogers, Director Annamarie Francois, Executive Director</p>	<p>(310) 825-4910 (310) 825-6812</p>		
<p>Civil Rights Project/Proyecto Derechos Civiles Gary Orfield and Patricia Gándara, Co-Directors</p>	<p>(310) 267-5562</p>		
<p>CONNECT: A Center for Research & Innovation in Elementary Schools Noel Enyedy, Director</p>	<p>(310) 825-2622</p>		
<p>Higher Education Research Institute (HERI) Cecilia Rios-Aguilar, Director Kevin Eagan, Managing Director and Director of Cooperative Institutional Research Program</p>	<p>(310) 825-1925</p>		
<p>Institute for Democracy, Education, and Access (IDEA) (UCLA Multidisciplinary Research and Service Unit) John Rogers, Director</p>	<p>(310) 206-8725</p>		

For more information about the units and schools listed, please see the websites:

<http://gseis.ucla.edu/research-centers>

<https://partnershipschools.gseis.ucla.edu>