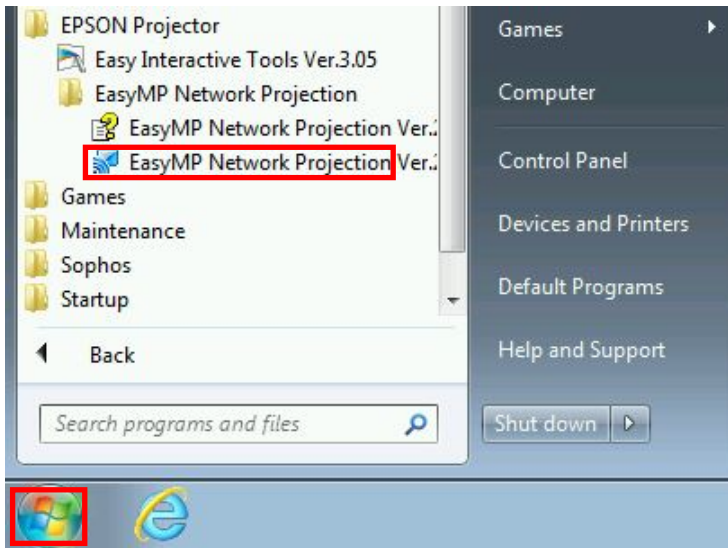
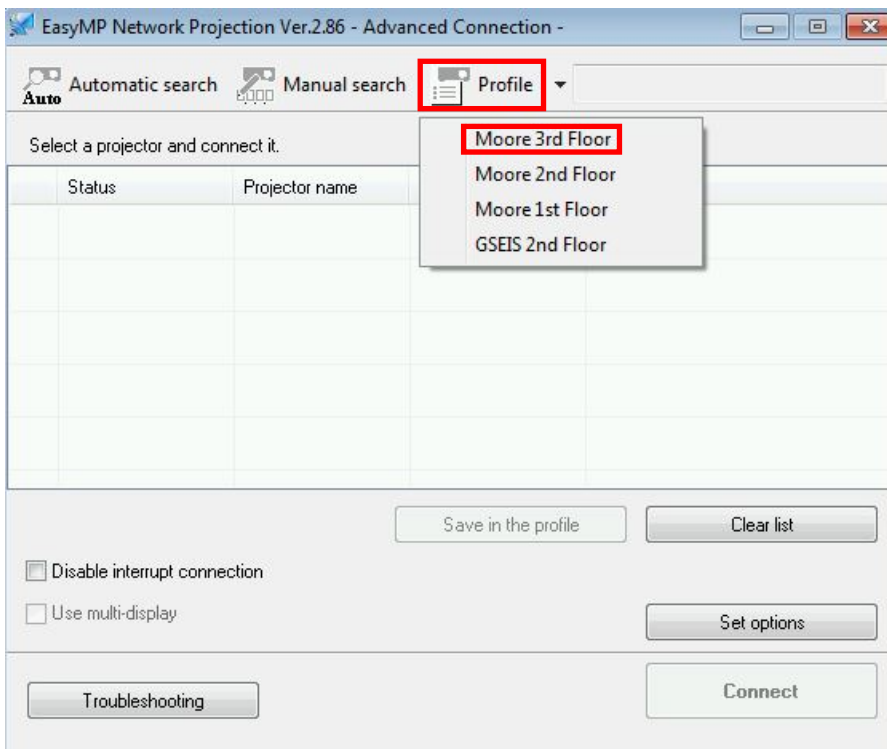


## How to Connect to GSEIS Wireless Projectors

1. Go to Windows button and open EasyMP Network Projection.

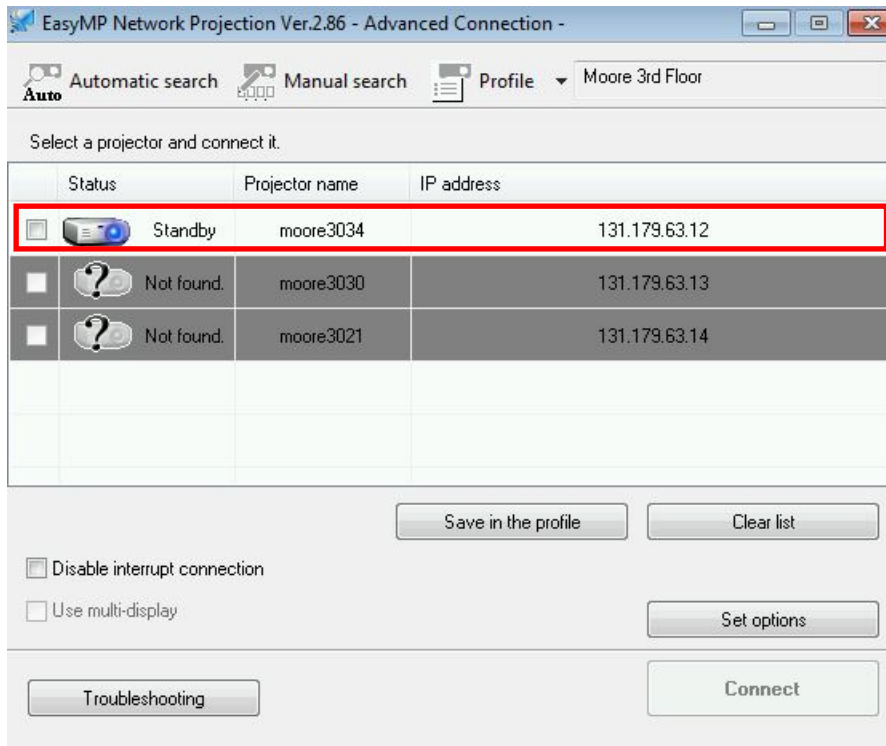


2. Click on the Profile button and select location.

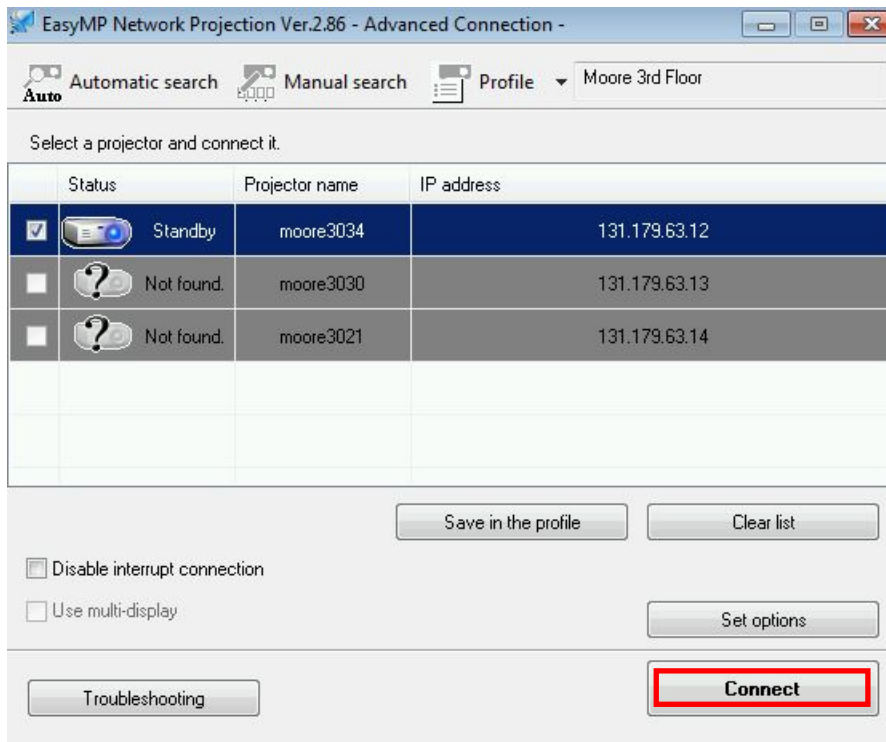


## How to Connect to GSEIS Wireless Projectors

3. Select wireless projector.

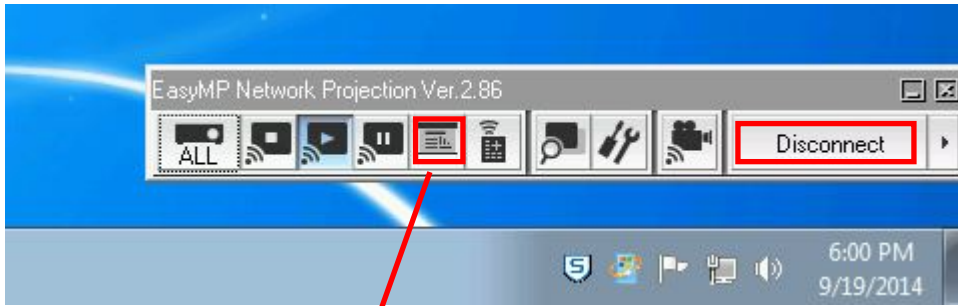


4. Click Connect.



## How to Connect to GSEIS Wireless Projectors

- When finished click Disconnect (at the toolbar located near the lower-right corner).




### Tip for PowerPoint

#### **Projecting Only a PowerPoint Slide Show (Presentation Mode)**

##### **Projecting Only a PowerPoint Slide Show (Presentation Mode)**

By using Presentation Mode, you can project only the PowerPoint Slide Show running on your computer. A black screen is projected when the Slide Show is not playing. You can start presentations smoothly without projecting unnecessary images.

In addition to PowerPoint, Keynote is compatible with Presentation Mode for Mac OS X.

To set Presentation Mode to On or Off, click the  button.